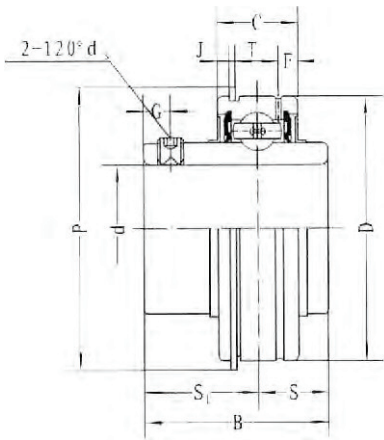




SER - Inserts *Normal Duty*

Bearing No.	Shaft Dia	Dimensions (Inches)											Load Rating		Wgt Lbs.
	Inch	D	B	C	S	S1	T	F	J	P	G	ds	Dynamic	Static	
SER 204 -12	3/4	1.8504	1.2205	0.6260	0.4060	0.8150	0.0440	0.1500	0.0970	2.0500	0.1890	1/4-28	2880	1500	0.26
SER 205 -14	7/8														0.39
205 -15	15/16	2.0472	1.3740	0.7480	0.5160	0.8580	0.0440	0.2050	0.0970	2.2800	0.1970	1/4-28	3150	1760	0.37
SER 205 -16	1														0.35
SER 206 -18	1 1/8														0.75
206 -19	1 3/16	2.4409	1.5000	0.8740	0.6260	0.8740	0.0670	0.2200	0.1290	2.6650	0.1970	1/4-28	4400	2540	0.71
SER 206 -20	1 1/4														0.66
SER 207 -20	1 1/4														1.15
SER 207 -22	1 3/8	2.8346	1.6890	0.9370	0.6890	1.0000	0.0670	0.2200	0.1290	3.0940	0.2640	5/16-24	5800	3450	1.06
SER 208 -24	1 1/2	3.1496	1.9370	1.0945	0.7480	1.1890	0.0670	0.2520	0.1290	3.4090	0.3150	5/16-24	6630	4070	1.50
SER 209 -26	1 5/8														1.72
SER 209 -28	1 3/4	3.3465	1.9370	1.0945	0.7480	1.1890	0.0670	0.2520	0.1290	3.6060	0.3150	5/16-24	7100	4630	1.54
SER 210 -30	1 7/8														1.87
210 -31	1 15/16	3.5433	2.0315	1.1260	0.7480	1.2830	0.0970	0.2950	0.1290	3.7990	0.3940	3/8-24	7870	5210	1.76
SER 210 -32	2														1.78
SER 211 -32	2	3.9370	2.1890	1.1890	0.8740	1.3150	0.0970	0.2950	0.1290	4.1930	0.3940	3/8-24	9800	6570	2.42
SER 212 -39	2 7/16	4.3307	2.5630	1.2520	1.0000	1.5630	0.0970	0.2950	0.1290	4.5910	0.3940	3/8-24	10720	7400	3.16
SER 215 -47	2 15/16	5.1181	3.0630	1.5000	1.3110	1.7520	0.1220	0.4063	0.1640	5.5000	0.4720	7/16-20	14830	11130	5.17



SL TYPE SEAL



L3 TYPE SEAL



FK BEARINGS



NEW PRODUCT



Shaft Guards, Stock
 FL204/F204, to
 FL212/F212,
 Shaft Size 1/2 to 2-7/16